

HARDWARE CATALOGUE



FT FARFAN
APPROPRIATE
TECHNOLOGY **LIMITED**



**KNOW MORE
ABOUT US!**

**We are the leading Industrial Supply Company in
Trinidad and Tobago**



FT Farfan is the most diversified Industry Supply Company in Trinidad & Tobago. Our Mission of "Good People Making Life Great" has guided our long history and extensive experience in providing appropriate technology to our customers.

We are all proud to represent our World-Class brands and serve our customers and suppliers with a true sense of honour. We represent a portfolio of best-in-class global brands, and it is our pleasure to do the very best for our staff, customers, and suppliers.

Our vision is to be the largest Industrial Sales & Service Group in our key market segments in the Caribbean, operating in modern facilities, with motivated staff using the latest technology.

Core Values

The values by which we run our company.



We value and care for all staff, customers, and suppliers

PEOPLE



We are consistent, clear and open in our communications and listen carefully.

COMMUNICATION



We are honest and courageous and consistently do the right thing.

ETHICS



We encourage new ideas and continuous improvement in whatever we do.

INNOVATION



We treat all staff, customers and suppliers with dignity and respect, provide open, honest feedback, and are guided by a sense of fair play.

RESPECT



TABLE OF CONTENTS

OUTDOOR POWER EQUIPMENT

CENTRIFUGAL AGRICULTURE PUMPS

- Loncin 04
- Koshin 04

GENERATORS

- Loncin 05
- Generac 05

LAWN MOWERS

- Yardmachine 06

PRESSURE WASHERS

- Ducati 06
- Danau 07
- Mi-T-M 07

WATER PUMPS

- Smart Stream 08
- Pedrollo 08

AGRI-EQUIPMENT

SPRAYERS

- Swissmex 09

WALK-BEHIND TRACTORS

- Grillo 09

AGRI, LAWN AND GARDEN SUPPLIES

BOOTS (Ladies)

- Hera 10

GARDEN HOSES

- Goodyear 10

MEDIA / PROPAGATION

- Sungro 10

FERTILIZERS

- Technigro 11

HORTICULTURAL SHADE CLOTH

- Tek-Knit 11

AUTOMOTIVE

BATTERIES

- Mutlu 12
- Maxibat 12

CASTROL LUBRICANTS

- Diesel Engine Oil 13
- Gasoline Engine Oil 13-14
- Gear Oil 15
- Grease 15
- Transmission Fluid 15
- Hydraulic Fluid 15

CRC - (Specialty Chemicals)

- Automotive 16
- Electrical 17
- Industrial 17
- Marine 17
- Specialty 18

POWER TOOLS

- MILWAUKEE 19

ACCESSORIES

ABRASIVES

- Sait 19

CANISTERS

- Midwest 19

CIRCULAR BLADES

- Diamond Products 19

- STIHL 20-21

WELDING SUPPLIES

- TECHNIWELD 22

- ATLANTIC 23

- WELDING PRODUCTS 23-25



1" CENTRIFUGAL PUMP

Part# LC25ZB21-1.2Q

Description:
Ideal equipment for agricultural field irrigation and drainage, drought resisting, tall building water supply, and other emergency applications.

Engine: 97cc OHV Engine **Max Output:** 35 gpm **Max Head:** 69 ft



2" CENTRIFUGAL PUMP

Part# LC50ZB30-4.5Q

Description:
Ideal equipment for agricultural field irrigation and drainage, drought resisting, tall building water supply, and other emergency applications.

Engine: 196cc G200F Gas Engine **Max Output:** 132 gpm **Max Head:** 98 ft



3" CENTRIFUGAL PUMP

Part# LC80ZB35-4.5Q

Description:
Ideal equipment for agricultural field irrigation and drainage, drought resisting, tall building water supply, and other emergency applications.

Engine: 196cc G200F Gas Engine **Max Output:** 264 gpm **Max Head:** 114.8 ft



2" HIGH PRESSURE PUMP

Part# LC50ZB60-4.5Q

Description:
Equipped with durable Loncin OHV G200F engine featuring lower operating temperature, higher fuel efficiency, and cleaner emissions.

Engine: 196cc G200F Gas Engine **Max Output:** 264 gpm **Max Head:** 197 ft



1" CENTRIFUGAL PUMP

Part# SEV 25L

Description:
Ideal for irrigation and sprinkler systems in agricultural and fire fighting applications at greater heights and longer distances.

Engine: 0.93 hp 26 cc KC26 Engine **Max Output:** 29 gpm **Max Head:** 105 ft



2" CENTRIFUGAL PUMP

Part# SEV 50X / SEH 50X

Description:
Ideal for irrigation, agriculture, pools and central clear water transfer.

Engine: 4.7 hp 179 cc Koshin Engine / 3.5 hp 122 cc Honda Engine **Max Output:** 163 gpm (K) / 158 gpm (H) **Max Head:** 89 ft (K) / 98 ft (H)

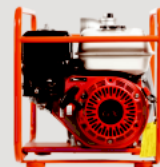


3" CENTRIFUGAL PUMP

Part# SEV 80X / SEH 80X

Description:
Ideal for irrigation, agriculture, pools, and general clear water transfer.

Engine: 4.7 hp 179 cc Koshin Engine / 4.8 hp 163cc Honda Engine **Max Output:** 246 gpm (K) / 246 gpm (H) **Max Head:** 90 ft (K) / 98 ft (H)



2" HIGH PRESSURE PUMP

Part# SERH 50B

Description:
Ideal for irrigation and sprinkler systems in agricultural and fire fighting applications at greater heights and longer distances.

Engine: 4.8 hp 163 cc Honda Engine **Max Output:** 116 gpm **Max Head:** 187 ft

ACCESSORIES FOR LONCIN AND KOSHIN CENTRIFUGAL PUMPS

Part Number	Description
200-A-AL	Type A Camlock Adapter 2" Male X Female Thread
300-A-AL	Camlock Male Adapter Type A Aluminum 3" Female Npt
200-C-AL	Type C Female Coupler 2" Hose Barb
300-C-AL	Type C Female Coupler 3" Hose Barb
200-D-AL	Camlock Female Coupler Type D Aluminum 2" Female Npt
300-D-AL	Camlock Female Coupler Type D Aluminum 3" Female Npt
200-E-AL	Camlock Male Adapter Type E Aluminum 2" Hose Barb
300-E-AL	Cam & Groove Male Adaptor Type E 3"
300-F-AL	Camlock Male Adapter Type F Aluminum 3" Male Npt
300-A-ALBSP	Type A Camlock Adapter 75MM Male X Female BSP Thread
7801-2X50CE	PVC Lay Flat Discharge Hose 2" X 50' C/W Camlock
7801-3X50CE	PVC Lay Flat Discharge Hose 3" X 50' C/W Camlock

Part Number	Description
7901-2X20CN	PVC Suction Hose 2" X 20' C/W Camlock & Nipple
7901-3X20CN	PVC Suction Hose 3" X 20' C/W Camlock & Nipple
GYH586-411-064	2" Suction Hose Green 100' Roll
GYH586-411-107	3" Suction Hose Green 100' Roll
GY537-564-020	Hose 2" Lay Flat - Blue 300' Roll
GY537-564-030	Hose 3" Lay Flat - Blue 300' Roll
DFVS25	Foot Valve 2" Npt
DFVS35	Foot Valve 3" Npt Use With 7901-3x20cn
RHS25	Strainer Round Hole 2" Npt Ref# Sr-200-Sp
RHS35	Round Hole Strainer 3" Npt Thread
SE 80XDF	Delivery Flange 3" Npt Thread

1 YEAR WARRANTY



2300w INVERTER GENERATOR

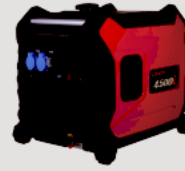
Part# LC2300I

DOMESTIC

Description:

Lightweight, easy-start unit, equipped with an ECO Mode.

Engine: 79cc LC148F Pull-Start Gas Engine with 1.05 gallon fuel tank.	Watts: • Starting: 2300w • Running: 1800w	Run Time: • 50% load is 6.3 hrs	Outlets: • (2) 110V
---	--	---	-------------------------------



4500w INVERTER GENERATOR

Part# LC4500I

DOMESTIC

Description:

Lightweight, easy-start unit, equipped with an ECO Mode.

Engine: 212cc LC173FD-3 Electric / Pull-Start Gas Engine with 2.64 gallon fuel tank	Watts: • Starting: 4500w • Running: 3500w	Run Time: • 50% load is 8.0hrs	Outlets: • (2) 110V
---	--	--	-------------------------------



3500w GASOLINE GENERATOR

Part# LC3500DCS

COMMERCIAL

Description:

Professional waterproof open-frame generator with compact structure and low noise emission.

Engine: 212cc G210FDA / Pull-Start Gas Engine with 3.96 gallon fuel tank.	Watts: • Starting: 3300w • Running: 3000w	Run Time: • 50% load is 15.0hrs	Outlets: • (2) 110V
---	--	---	-------------------------------



6500w GASOLINE GENERATOR

Part# LC6500D-DCS

COMMERCIAL

Description:

Professional waterproof open-frame generator with compact structure and low noise emission.

Engine: 389cc LL188FD Electric / Pull-Start Gas Engine with 6.6 gallon fuel tank	Watts: • Starting: 5500w • Running: 5000w	Run Time: • 50% load is 9.0hrs	Outlets: • (2) 110V • (1) 220V
--	--	--	---



10,000w GASOLINE GENERATOR W/ATS

Part# LC10000D-DCS

COMMERCIAL

Description:

Professional waterproof open frame generator with compact structure and low noise emission. Unit comes with a built-in ATS.

Engine: 459cc LC192FD Electric / Pull-Start Gas Engine with 6.6 gallon fuel tank.	Watts: • Starting: 8500w • Running: 7800w	Run Time: • 50% load is 8.0hrs	Outlets: • (2) 110V • (1) 220V
---	--	--	---

WARRANTY: 3 Year Limited Domestic & 1 Year Limited Commercial



3300w INVERTER GENERATOR

Part# 7154

DOMESTIC

Description:

Features advanced PowerRush™ technology that delivers over 50% more starting capacity so you can do more with less.

Engine: 149CC OHV Gasoline Pull-Start Engine with 1.06 gallon fuel tank	Watts: • Starting: 3300w • Running: 2500w	Run Time: • 50% load is 4.5hrs	Outlets: • (2) 120V 20A • 5-20R Duplex • (1) 120V 30A • L5-30R Twist Lock • (2) USB Outlets
---	--	--	---



3600w PORTABLE GENERATOR

Part# 7677

COMMERCIAL

Description:

Used to tackle home projects, provide power for tools, or deliver essential electricity in case of an outage.

Engine: 212CC OHV Gasoline Pull-Start Engine with 3.7 gallon fuel tank	Watts: • Starting: 4500w • Running: 3600w	Run Time: • 50% load is 9.3 hrs	Outlets: • (2) 120V 20A • 5-20R GFCI • (1) 120V 30A • L5-30R
--	--	---	---



6500w PORTABLE GENERATOR

Part# 7680

COMMERCIAL

Description:

Features advanced PowerRush™ technology that delivers over 50% more starting capacity so you can do more with less.

Engine: 389CC OHV Gasoline Pull-Start Engine with 7.9 gallon fuel tank	Watts: • Starting: 8125w • Running: 6500w	Run Time: • 50% load is 11.5hrs	Outlets: • (2) 120V 20A • 5-20R GFCI • (1) 120/240V • 30A L14-30R
--	--	---	--



6500w ELECTRIC START GENERATOR

Part# 7682

COMMERCIAL

Description:

Offers PowerRush™ Advanced Technology which delivers more than a 40% increased starting capacity, allowing you to do more with less.

Engine: 389CC OHV Gasoline Electric and Pull-Start Engine with 6.9 gallon fuel tank	Watts: • Starting: 8125w • Running: 6500w	Run Time: • 50% load is 10.5hrs	Outlets: • (2) 120V 20A • 5-20R GFCI • (1) 120/240V • 30A L14-30R
---	--	---	--



8000w PORTABLE GENERATOR

Part# 7686

COMMERCIAL

Description:

Offers many benefits that make this model a favourite for emergency power or recreational use.

Engine: 420CC OHV Gasoline Electric and Pull-Start Engine with 7.9 gallon fuel tank	Watts: • Starting: 10,000w • Running: 8000w	Run Time: 50% load is 10 hrs	Outlets: • (2) 120V 20A • 5-20R GFCI • (1) 120/240V • 30A L14-30R
---	--	--	--

ACCESSORIES FOR GENERAC GENERATORS

Part Number	Description
WKPB30	Portable Generator Through the Wall Kit, 6 Circuit/110v
306CRK	Manual Transfer Switch 7500w 6 Circuits 125v/250v 30amps

1 YEAR WARRANTY



20" PUSH MOWER WITH SIDE DISCHARGE

Part# 11A-02MY345

Description:

Best for small- to-medium sized yards up to 1/2 acre with flat terrain.

Engine: 79cc OHV PowerMore engine
Height Adjustment: 3 positions
Fuel Type: Gas
Cutting Height: 1 1/4" - 3 3/4"
Fuel Tank Capacity: 0.8 qt



3-IN-1 21" PUSH MOWER WITH SIDE DISCHARGE

Part# 11A-B23M345

Description:

Suitable for cutting, bagging and mulching and best for small- to-medium sized yards with flat lawn.

Engine: 140cc OHV PowerMore engine
Height Adjustment: 6 positions
Fuel Type: Gas
Cutting Height: 1 1/4" - 3 3/4"
Fuel Tank Capacity: 0.8 qt



3-IN-1 21" SELF-PROPELLED MOWER WITH SIDE DISCHARGE

Part# 12AVB2M5345 / 12AVB2ML345

Description:

Suitable for cutting, bagging and mulching. The push drive system manoeuvres easily around landscaping.

Engine: 159cc OHV PowerMore engine
Height Adjustment: 6 positions
Fuel Type: Gas
Cutting Height: 1 1/4" - 3 3/4"
Fuel Tank Capacity: 0.8 qt

Part Number	Description
GTX10W30SP205	10W30 ENGINE OIL
131-039	SPARK PLUG
942-0740	BLADE
946-05144	CONTROL CABLE

Part Number	Description
GTX10W30SP205	10W30 ENGINE OIL
131-031	SPARK PLUG
742P0741-X	BLADE
946-04703A	CONTROL CABLE

Part Number	Description
GTX10W30SP205	10W30 ENGINE OIL
131-031	SPARK PLUG
951-15245	AIR FILTER
742P0741-X	BLADE
946-1130	CONTROL CABLE

1 YEAR WARRANTY

DOMESTIC



1600 PSI PRESSURE WASHER (1.72 GPM, 110V)

Part# DPW1400S

Description:

Professional pressure washers equipped for deep cleaning even in the most complicated areas.

This new line features more manageable and durable pressure washers.

Run Time:

20 minutes of continuous operation

Part Number	Description
DPW861400/P2/29	Replacement Gun for DPW1400
DPW861400/P2/30	Replacement Wand for DPW1400
DPW861400/P2/28	Replacement Hose for DPW1400

DOMESTIC



2000 PSI PRESSURE WASHER (1.85 GPM, 110V)

Part# DPW1800S

Description:

Professional pressure washers equipped for deep cleaning even in the most complicated areas.

This new line features more manageable and durable pressure washers.

Run Time:

35 minutes of continuous operation

Part Number	Description
DPW861800/P2/45	Replacement Gun for DPW1800
DPW861800/P2/44	Replacement Wand for DPW1800
DPW861800/P2/46	Replacement Hose for DPW1800
DPW861800/P2/47	Hose Flange for DPW1800

DOMESTIC



2300 PSI PRESSURE WASHER (2.0 GPM, 110V)

Part# DPW2100S

Description:

Professional pressure washers equipped for deep cleaning even in the most complicated areas.

This new line features more manageable and durable pressure washers.

Run Time:

45 minutes of continuous operation

Part Number	Description
DPW862100/P2/74	Replacement Gun for DPW2100
DPW862100/P2/75	Replacement Wand for DPW2100
DPW862100/P2/33	Replacement Hose for DPW2100

DOMESTIC

2600 PSI GAS PRESSURE WASHER (2.5GPM)
Part# DCAC-18/9JV

Description:
Domestic unit forged axial pump, with thermal protection and detergent injector.

Engine:
6.5hp/196cc Vertical Gas Engine

DOMESTIC / LIGHT COMMERCIAL

2800 PSI GAS PRESSURE WASHER (3.0 GPM)
Part# DCAA-19/11JB

Description:
Commercial grade forged axial pump, with thermal protection and detergent injector.

Engine:
6.5hp/196cc OHV Gas Engine

ACCESSORIES FOR DANAU PRESSURE WASHERS

Part Number	Description
06.22.01.0751	24" Pressure Washer Wand
06.23.03.1851	Rotary Turbo Nozzle 3600psi
05.06.01.1901	Soap/Chemical Tubing Kit
06.21.04.2110	Pressure Washer Gun 3300psi

Part Number	Description
06.50.01.0130	Replacement Tips 5000psi (4/pk)
05.13.12.0320	15" Rotary Surface Cleaner
06.15.02.0101	Replacement Hose 3200psi

DOMESTIC

2600 PSI GAS PRESSURE WASHER (2.2GPM)
Part# CV-2600-4MMC

Description:
This portable series is an excellent choice for all-purpose cleaning around the home, shop or property. Use it to clean decks, driveways, siding and vehicles.

Pump:

- AR Axial
- Aluminium manifold
- Thermal relief valve
- In-line water strainer
- Built-in low-pressure detergent injector

Engine:
170cc Mi-T-M OHV Engine

DOMESTIC

2600 PSI GAS PRESSURE WASHER (2.2GPM)
Part# CV-2600-4MHC

Description:
This portable series is an excellent choice for all-purpose cleaning around the home, shop or property. Use it to clean decks, driveways, siding, and vehicles.

Pump:

- AR Axial
- Aluminium manifold
- Thermal relief valve
- In-line water strainer
- Built-in low-pressure detergent injector

Engine:
160cc Honda GCV160 OHC Engine

DOMESTIC / LIGHT COMMERCIAL

3000 PSI GAS PRESSURE WASHER (2.3 GPM)
Part# CM-3000-4MMC

Description:
Clean dirt and grime from home exteriors, outdoor equipment and just about any surface with the handy ChoreMaster® Horizontal Series. It's a great choice for both home and small business owners.

Pump:

- AR Axial
- Equipped with Mi-T-M Pressure Relief Start
- Thermal relief valve
- In-line water strainer
- Built-in low-pressure detergent injector
- Forged brass manifold

Engine:
212cc Mi-T-M OHV Engine

COMMERCIAL

3200 PSI PRESSURE WASHER (2.4 GPM)
Part# CM-3200-OMMB

Description:
The multipurpose CM Series is great for keeping patios, siding, and equipment clean. Use its built-in detergent injector with a Mi-T-M cleaner to effectively remove mold, mildew, and dirt.

Pump:

- AR Axial
- Equipped with Mi-T-M Pressure Relief Start
- Thermal relief valve
- In-line water strainer
- Built-in low-pressure detergent injector
- Forged brass manifold

Engine:
212cc Mi-T-M OHV Engine

ACCESSORIES FOR Mi-T-M PRESSURE WASHERS

Part Number	Description
AW-0016-0381 or 16-0443	Wand with Adjustable Nozzle
16-0442	Gun Assembly For CV Model 4000psi Max W/1/4" Inlet
AW-0015-0239	Replacement Hose 30' (CV Units)

Part Number	Description
AW-0050-0176	Extension Hose 23' 4000psi
AW-0018-0302	High Pressure Nozzle 0 Deg Red 3.5 Orifice
AW-0018-0150	High Pressure Nozzle 15 Deg Yellow 3.0 Orifice
AW-0018-0303	High Pressure Nozzle 25 Deg Green 3.0 Orifice

Part Number	Description
AW-4003-0000	High Pressure Nozzle 4/Pk 3.0 Orifice 0/15/25/40 Degree
AW-7020-8009	Rotary Surface Cleaner 14" 4200 Psi Max @ 8gpm
AW-4085-0016	Pressure Washer Pump Oil Qt.



1/2 HP JET PUMP WITH ELECTRONIC HEAD

Part# XJm61C+PS-04A

Description:
 Suitable for clean-water use with minimal impurities and non-corrosive liquids.

Inlet/Outlet:	Max Flow:	Outlet:	Max Head:	Suction Lift:
1" x 1"	40L/Min	110V	38m	9m

• Copper Winding • Noryl Impeller • Standard Steel Shaft



3/4 HP JET PUMP WITH ELECTRONIC HEAD

Part# XJm81C+PS-04A

Description:
 Suitable for clean-water use with minimal impurities and non-corrosive liquids.

Inlet/Outlet:	Max Flow:	Outlet:	Max Head:	Suction Lift:
1" x 1"	50L/Min	110V	42m	9m

• Copper Winding • Noryl Impeller • Standard Steel Shaft



ELECTRONIC PUMP CONTROLLER

Part# PS-04A (10A 110V 60HZ)

Description:
 Ideal for starting the pump when opening the tap and stopping the pump in case of running dry.

Starting Pressure Setting:	Outlet:	Connection Thread:	Max. Operating Pressure:
1.2 bar/1.5 bar/2.2 bar	110V	1"	10 bar

• Copper Winding • Noryl Impeller • Standard Steel Shaft



1/2 HP PERIPHERAL PUMP

Part# XKM60-1

Description:
 Suitable for lifting clean water from the well, sprinkling irrigation in garden, pressure boosting of running water and supporting equipment.

Inlet/Outlet:	Max Flow:	Outlet:	Max Head:	Suction Lift:
1" x 1"	25L/Min	110V	22m	8m

• Copper Winding • Noryl Impeller • Standard Steel Shaft



SUBMERSIBLE SEWAGE PUMP

Part# XSP12-8.5/0.45l

Description:
 Suitable for wastewater drainage in factories, construction sites, and commercial facilities.

Max Flow:	Max Head:	Outlet:	Suction Lift:
200L/Min	8.5m	110V	8m

• Copper Winding • Noryl Impeller • Standard Steel Shaft



1/2 HP SELF PRIMING JET PUMP PACKAGE WITH 18L PRESSURE TANK

Part# JSWM 1CX-18VT-1

Description:
 Suitable for use with clean water and liquids that are not chemically aggressive towards the materials from which the pump is made.

Inlet/Outlet:	Max Flow:	Max Head:	Suction Lift:	Outlet:
1" x 1"	60L/Min	30m	9m	110V



1/2 HP SELF PRIMING JET PUMP PACKAGE WITH EASY PRESS ELECTRONIC PUMP CONTROLLER

Part# JSWM 1CX-EZP-1

Description:
 Suitable for use with clean water and liquids that are not chemically aggressive towards the materials from which the pump is made.

Inlet/Outlet:	Max Flow:	Max Head:	Suction Lift:	Outlet:
1" x 1"	60L/Min	30m	9m	110V



3/4 HP SELF PRIMING JET PUMP PACKAGE WITH 18L PRESSURE TANK

Part# JSWM 1AX-18VT-1

Description:
 Suitable for use with clean water and liquids that are not chemically aggressive towards the materials from which the pump is made.

Inlet/Outlet:	Max Flow:	Max Head:	Suction Lift:	Outlet:
1" x 1"	60L/Min	43m	9m	110V



3/4 HP SELF PRIMING JET PUMP PACKAGE WITH EASY PRESS ELECTRONIC PUMP CONTROLLER

Part# JSWM 1AX-EZP-1

Description:
 Suitable for use with clean water and liquids that are not chemically aggressive towards the materials from which the pump is made.

Inlet/Outlet:	Max Flow:	Max Head:	Suction Lift:	Outlet:
1" x 1"	60L/Min	43m	9m	110V



1 HP SELF PRIMING JET PUMP PACKAGE WITH 18L PRESSURE TANK

Part# JSWM 2CX-18VT-1

Description:
 Suitable for use with clean water and liquids that are not chemically aggressive towards the materials from which the pump is made.

Inlet/Outlet:	Max Flow:	Max Head:	Suction Lift:	Outlet:
1" x 1"	70L/Min	47m	9m	110V



1 HP SELF PRIMING JET PUMP PACKAGE WITH EASY PRESS ELECTRONIC PUMP CONTROLLER

Part# JSWM 2CX-EZP-1

Description:
 Suitable for use with clean water and liquids that are not chemically aggressive towards the materials from which the pump is made.

Inlet/Outlet:	Max Flow:	Max Head:	Suction Lift:	Outlet:
1" x 1"	70L/Min	47m	9m	110V

ACCESSORIES FOR PEDROLLO WATER PUMPS

Part #	Description
500140	Float Switch 10 Meters 10 Amps Rated Pedrollo Brand
50015	Pressure Gauge Mr 6 6 Bar Rated W/1/4" Thread Pedrollo Brand
50016	5 Way Brass Connector 1" & 1/4" Thread Pedrollo Brand
50018	Square D Pressure Switch Fsg 2 1.4-2.8 Bar/20-40 Psi Pedrollo Brand
50066/215UIP	Easy Press W/Pressure Gauge 115v Ect. Pump Cont. 2hp 16a

Part #	Description
11A0001800	Vertical Pressure Tank 18 Lts 3/4" Npt W/Fixed Bladder
11A0001807	Vertical Pressure Tank 18 Ltrs 1" Npt Thread W/Fixed Bladder
11A0005000	Vertical Pressure Tank 50 Lts 1" Npt Thread W/Fixed Bladder
11A0008000	Vertical Pressure Tank 80 Lts 1" Npt Thread W/Fixed Bladder
11A0015000	Vertical Pressure Tank 150 Lts 1-1/4" Npt W/Fixed Bladder

Part #	Description
11A0020000	Vertical Pressure Tank 200 Ltr 1-1/4" Npt W/Fixed Bladder
11A0030000	Vertical Pressure Tank 300 Lts 1-1/4" Npt W/Fixed Bladder
11A0040000	Vertical Pressure Tank 400 Lts 1-1/4" Npt W/Fixed Bladder

3 MONTH WARRANTY

Heavy Duty Series SW04



SW04 BACKPACK SPRAYER INTERNAL PISTON 5.3 GAL. MODEL NUMBER: 289176

Description:
Ideal for use in greenhouses, agriculture, landscaping, livestock farming, forestry & pest control.

Tank capacity: 5.3 GAL / 20L	Nozzle: Plastic adjustable	Pumping system: Internal piston with agitator
Output per minute at 45 psi (3bar): 21.3 fl oz (630 ml)	Carrying straps: With shoulder pads	Working pressure: 15-87 psi (1-6 bar)
Hose: Fibrevinyl reinforced 3/8" (95.25mm) 43" (1.1m) long	Net weight: 12.3 lbs (5.9 kg)	Shut-off valve: Professional ergonomic
Seals & gaskets: NBR	Spray lance: FVR Fibreglass 20.5" / 52 cm	Seals & gaskets - critical areas: VITON

Heavy Duty Series SW07



SW07 COMPRESSION SPRAYER 1.4 GAL MODEL NUMBER: 315175

Description:
Ideal for use in greenhouses, agriculture, landscaping, livestock farming, forestry & pest control.

Tank capacity: 1.4 GAL / 5.5 L	Nozzle: Plastic adjustable	Pumping system: Compression
Output per minute at 45 psi (3bar): 29.8 Gal (880 ml)	Piston sleeve: 1.5" / 38 mm	Working pressure: 14.5-36.2 psi (1-2.5 bar)
Hose: Fibrevinyl reinforced 3/8" (95.25mm) 43" (1.1m) long	Net weight: 2.8 lbs (1.2 kg)	Shut-off valve: Professional ergonomic with filter
Seals & gaskets: NBR	Spray lance: FVR Fibreglass 16.5" / 42 cm	Seals & gaskets - critical areas: VITON

Heavy Duty Series SW08



SW08 COMPRESSION SPRAYER 1.8 GAL MODEL NUMBER: 316175

Description:
Ideal for use in greenhouses, agriculture, landscaping, livestock farming, forestry & pest control.

Tank capacity: 2.4 GAL / 9 L	Nozzle: Plastic adjustable	Pumping system: Compression
Output per minute at 45 psi (3bar): 29.8 Gal (880 ml)	Piston sleeve: 1.5" / 38 mm	Working pressure: 14.5-36.2 psi (1-2.5 bar)
Hose: Fibrevinyl reinforced 3/8" (95.25mm) 43" (1.1m) long	Net weight: 3.4 lbs (1.5 kg)	Shut-off valve: Professional ergonomic with filter
Seals & gaskets: NBR	Spray lance: FVR Fibreglass 10.5" / 52 cm	Seals & gaskets - critical areas: VITON



WALK-BEHIND TRACTORS

1 YEAR WARRANTY



Part# G52

Description:
• 2-Wheel Tractor 1-Axle
• 6.5 hp Kohler Gas, Std. Wheels



Part# 978511

Description:
• 20" Rotary Tiller attachment for G52



Part# 9M5411

Description:
• 50" Brushcutter attachment for G52



Part# GZ3

Description:
• Tiller 4.4 hp Honda Gas
• 32" Width 1f/1r Gears



Part# 947311

Description:
• Used behind the tiller to make ridges and furrows.



BOOTS (LADIES)



Part# HERA-(SIZE)

Description: Ladies Garden Boots **Sizes:** 5 - 12 **Colour:** Black with Yellow Sole



GARDEN HOSES



3 PLY LAYER PVC GARDEN HOSE

Description:

Hose for water conduction (non-food use), durable, and lightweight and good flexibility.

• Working Pressure: 4.5 Bar/66 Psi • Bronze or Brass Connectors • Burst Pressure 13.8 Bar/200 Psi

Available Sizes:

1/2" x 50' (GY12503GHS) 1/2" x 75' (GY12753GHS) 1/2" x 100' (GY121003GHS) 3/4" x 50' (GY58503GHS) 3/4" x 100' (GY581003GHS)



MEDIA | PROPAGATION



SUNGRO PROFESSIONAL PEAT MIX #15

Description:

SunGro® Mix #15 is recommended for the production of a wide variety of container-grown crops, from vegetables to bedding plants and cuttings.

• Floriculture • Natural & Organic • Propagation • Transplants



Part# TG094515-225
Description:
• Super Starter Fertilizer 225g
• Water Soluble, 9-45-15



Part# TG094515-500
Description:
• Super Starter Fertilizer 500g
• Water Soluble, 9-45-15



Part# TG041838-225
Description:
• Tomato Fertilizer 225g
• Water Soluble, 4-18-38 Plus
• Hydroponic & Greenhouse



Part# TG041838-500
Description:
• Tomato Fertilizer 500g
• Water Soluble, 4-18-38 Plus
• Hydroponic & Greenhouse



Part# TG153015-225
Description:
• All Purpose Fertilizer 225g
• Water Soluble, 15-30-15 Plus



Part# TG153015-500
Description:
• All Purpose Fertilizer 500g
• Water Soluble 15-30-15



Part# TG042039-225
Description:
• Herb Fertilizer 225g
• Water Soluble, 4-20-39 Plus
• Hydroponic & Greenhouse



Part# TG042039-500
Description:
• Herb Fertilizer 500g
• Water Soluble, 4-20-39 Plus
• Hydroponic & Greenhouse



Part# TG240715-225
Description:
• Lawn & Turf Fertilizer 225g
• Water Soluble, 24-7-15 Plus



Part# TG240715-500
Description:
• Lawn & Turf Fertilizer 500g
• Water Soluble 24-7-15 Plus



Part# TG081536-225
Description:
• Lettuce Fertilizer 225g
• Water Soluble, 8-15-36 Plus
• Hydroponic & Greenhouse



Part# TG081536-500
Description:
• Lettuce Fertilizer 500g
• Water Soluble 8-15-36 Plus
• Hydroponic & Greenhouse



Part# TG074017-225
Description:
• Bloom Booster 225g
• Water Soluble, 7-40-17 Plus



Part# TG074017-500
Description:
• Bloom Booster 500g
• Water Soluble, 7-40-17 Plus



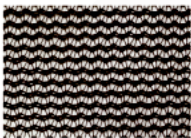
Part# TG-225 MIX
Description:
• 225g, Mixed: Tomato, Lettuce, Lawn
• Starter, All Purpose, Bloom Booster
• Water-Soluble



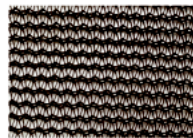
Part# TG-500-MIX
Description:
• 500g, Mixed: Tomato, Lettuce, Lawn
• Starter, All Purpose, Bloom Booster
• Water-Soluble



HORTICULTURAL SHADE CLOTH



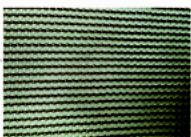
Part# R-2018/30
Description:
• Horticultural Shade Cloth 30%
• Black 12' X 300' (Black Edge)



Part# [R-2018/40]
Description:
• Horticultural Shade Cloth 40%
• Black 12' X 300' (Green Edge)



Part# R-2018/50
Description:
• Horticultural Shade Cloth 50%
• Black 12' X 300' (Blue Edge)



Part# R-2018/50G
Description:
• Horticultural Shade Cloth 50%
• Green 12' X 300' (Blue Edge)



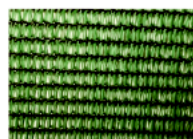
Part# R-2018/60
Description:
• Horticultural Shade Cloth 60%
• Black 12' X 300' (Gold Edge)



Part# R-2018/60G
Description:
• Horticultural Shade Cloth 60%
• Green 12' X 300' (Gold Edge)



Part# R-2018/70
Description:
• Horticultural Shade Cloth 70%
• Black 12' X 300' (Silver Edge)



Part# R-2018/70G
Description:
• Horticultural Shade Cloth 70%
• Green 12' X 300' (Silver Edge)



Part# R-2018/70-PS
Description:
• Privacy Screen/Shade Cloth 70%
• Black 6' X 150' (Silver Edge)

MUTLU PART NUMBER	PLATES	NAME	BOX STYLE	CCA	HCA	RC, mins	Amp, Hrs, Ah	HEIGHT, mm
SMF42B19FL	11	NS40L	B20	390	488	60	42	222
SMF55B24L	13	NS60L	B24	480	600	95	55	222
SMF65B24R	13	NS60R	B24	480	600	95	55	222
SMF56077	11	DIN45	LB2	540	675	100	60	175
SMF57572	15	DIN66	LB3	750	938	125	75	175
SMF55D23FL	13	55D23	D23	480	600	100	60	225
SMF80D26L	15	NS70L	D26	680	850	120	75	225
SMF80D26R	15	NS70R	D26	680	850	120	75	225
SMF115D31FL	17	N70 L	D31	800	1000	160	100	225
SMF115D31FR	17	N70 R	D31	800	1000	160	100	225
SMF58039	15	DIN88	LB4	680	850	130	80	175
SMF60038	20	DIN100	L5	880	1100	160	100	190
MF65024	21	N150	D5	1050	1313	300	150	223
MF68035	29	N150	D5	1250	1563	380	180	223
MF72540	33	N200	D6	1450	1813	450	225	242



MAXIBAT PART NUMBER	PLATES	NAME	BOX STYLE	CCA	HCA	RC, mins	Amp, Hrs, Ah	HEIGHT, mm
MF50B24L	13	NS60L	B24	330	420	60	45	22
MF50B24R		NS60R						
MF80D26L	15	NS70L	D26	600	750	120	70	225
MF80D26R		NS70R						
MF100D31FL	17	N70L	D31	720	900	140	90	224
MF100D31FR		N70R						
MF55560	10	DIN45	LB2	450	570	95	55	175



DIESEL ENGINE OIL



SYNTHETIC BLEND WITH **SYSTEM PRO TECHNOLOGY** FOR COMMERCIAL AND HEAVY DUTY DIESEL ENGINES

Castrol VECTON Long Drain is an advanced part-synthetic heavy duty diesel engine oil that delivers up to 45% extra performance reserve for longer useful oil life.

Part# VECLD15W40CK4205 Vecton LD 15W-40 CK-4/E9	Part# VECLD15W40CK4221 Vecton LD 15W-40 CK-4/E9	Part# VECLD15W40CK4224 Vecton LD 15W-40 CK-4/E9
Part# VECLD15W40CK4241 Vecton LD 15W-40 CK-4/E9		



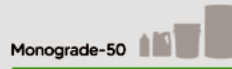
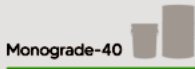
DIESEL ENGINE OIL



MINERAL MOTOR OIL FOR COMMERCIAL AND HEAVY DUTY DIESEL ENGINES

Castrol CRB is a multipurpose heavy duty diesel engine oil, designed to provide superior protection.

CRB40CF221 CRB Monograde 40	CRB40CF241 CRB Monograde 40		
CRB50CF221 CRB Monograde 50	CRB50CF241 CRB Monograde 50	CRB50CF205 CRB Monograde 50	CRB50CF224 CRB Monograde 50
CRBMU15W40CK4221 CRB Multi 15W-40	CRBMU15W40CK4173 CRB Multi 15W-40	CRBMU15W40CK4205 CRB Multi 15W-40	CRBMU15W40CK4224 CRB Multi 15W-40



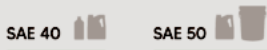
GASOLINE ENGINE OIL



PREMIUM MONOGRADE OILS THAT ARE ENGINEERED FOR GREATER PROTECTION AGAINST THERMAL BREAKDOWN

Castrol HD is suitable for use in automotive gasoline engines where the manufacturer recommends an API SP or earlier specification monograde lubricant.

Part# HDMO40WSP205 HD Motor Oil 40	Part# HDMO40WSP224 HD Motor Oil 40
---------------------------------------	---------------------------------------



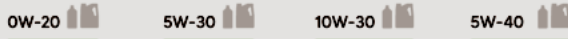
GASOLINE ENGINE OIL



FULL SYNTHETIC WITH FLUID TITANIUM TECHNOLOGY FOR GASOLINE ENGINES

Castrol EDGE is a full synthetic motor oil that is engineered for drivers who want only the best from their engines.

EDG0W20SP203 Edge 0W-20	EDG0W20SP229 Edge 0W-20	EDG5W30SP203 Edge 5W-30	EDG5W30SP229 Edge 5W-30
EDG10W30SP203 Edge 10W-30	EDG10W30SP224 Edge 10W-30	EDG5W40SN203 Edge 5W-40	EDG5W40SN229 Edge 5W-40



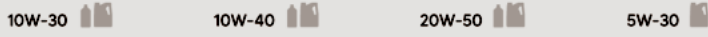
GASOLINE ENGINE OIL



SYNTHETIC TECHNOLOGY WITH INTELLIGENT MOLECULES FOR GASOLINE ENGINES

Castrol MAGNATEC and its intelligent molecules will protect your car's engine during the critical warm-up stage when up to 75% of engine wear occurs.

Part# MAG10W30SP203 Magnatec 10W-30	Part# MAG10W30SP224 Magnatec 10W-30	Part# MAG10W40SP203 Magnatec 10W-40
Part# MAG10W40SP224 Magnatec 10W-40	Part# MAG20W50SP203 Magnatec 20W-50	Part# MAG20W50SP224 Magnatec 20W-50
Part# MAGSS5W30228 Magnatec ST-ST 5W-30 A5 Full Synthetic		



GASOLINE ENGINE OIL



CONVENTIONAL MOTOR OIL WITH DOUBLE ACTION FORMULA FOR GASOLINE POWERED ENGINES.

Castrol GTX is a premium conventional motor oil that has been helping to extend engine life for over 50 years.

GTX10W30SP205 GTX 10W-30	GTX10W30SP224 GTX 10W-30	GTX20W50SP205 GTX 20W-50	GTX20W50SP224 GTX 20W-50
GTX20W50241 GTX 20W-50			



GEAR OIL

Castrol is the axle oil of choice for many leading car and transmission manufacturers.

Part# SYNTRL575W90203 Syntrax Ltd Slip 75W-90	Part# AXLLS80W90GL5205 Axle Limited Slip 80W-90	Part# AXLLS80W90GL5162 Axle Limited Slip 80W-90
Part# AXLLS80W90GL5173 Axle Limited Slip 80W-90	Part# AXL85W140GL5205 Axle GL-5 85W-140	Part# AXL85W140GL5241 Axle GL-5 85W-140
Part# AXL85W140GL5221 Axle GI-5 85W-140		

75W-90

80W-90

85W-140



GREASE

Our range includes multi-purpose and special greases for excellent protection in demanding conditions.

Part# SPHEPL2405 Spheerol EPL2	Part# PYRREDEP2430 Pyroplex Red EP 2	Part# PYRREDEP2405 Pyroplex Red EP 2
Part# MOLAB602202ES405 Molub-Alloy 860/220-2 ES		



TRANSMISSION FLUID

The **CASTROL Transmission** portfolio contains a broad range of automatic transmission fluid liquid-engineered to protect critical transmission components.

CASTROL UTF, Universal Tractor Fluid, is a premium hydraulic/transmission fluid that exceeds the refill and service top-up needs of farm and industrial tractor transmission, differentials, and immersed disc brakes

Part# TRAFSMVATF203 Transmax Full Syn Multiveh ATF	Part# TRAMXCVT203 Transmax CVT	Part# TRAMXDXME203 Transmax Dex/Merc	Part# TRAMXDXME161 Transmax Dex/Merc
Part# TRAMXIMV224 Transmax Import Multi Vehicle	Part# TRAMXIMV203 Transmax Import Multi Vehicle	Part# UTF221 Universal Tractor Fluid	Part# UTF241 Universal Tractor Fluid



HYDRAULIC FLUID

The **CASTROL Hyspin** hydraulic oil range is based upon highly refined mineral oil enhanced with a stabilised zinc additive system.

Part# HYSAWHM32162 Hyspin AWH-M 32	Part# HYSAWHM46162 Hyspin AWH-M 46	Part# HYSAWS68221 Hyspin AWS 68	Part# HYSAWS32241 Hyspin AWS 32
Part# HYSAWS4624 Hyspin AWS 46	Part# HYSAWS68241 Hyspin AWS 68	Part# HYSAWS100241 Hyspin AWS 100	Part# HYSAWS22241 Hyspin AWS 22

Available in:



AUTOMOTIVE


Part# 40144
Tannery Leather Cleaner 8 oz.
And Conditioner 12/Cs



Part# 5005
Power Lube 9 oz



Part# 5006
Power Lube 11 oz



Part# 5007
Power Lube 1 gal



Part# 5018-CRC
Lectra Motive
Cleaner 19oz



Part# 5021
Gasket Remover
12 oz



Part# 5025
Engine Degreaser
15 oz



Part# 5037
White Lithium
Grease 10 oz



Part# 5046
Battery Terminal
Protector 7.5 oz



Part# 5061
Fuel Injector And Carburetor
Cleaner 12 oz



Part# 5062
Premium Fuel Injector
Cleaner 12 oz



Part# 5074
Heavy Duty
Silicone 7.5 oz



Part# 5077
Octane Boost
12 oz



Part# 5078
Throttle Body & Air Intake
Cleaner 12 oz



Part# 5081
Clean-R-Carb Carburetor
Cleaner 16 oz



Part# 5089
Brakeleen Brake Parts
Cleaner 19 oz



Part# 5103-CRC
Qd Electronic Cleaner
11 oz



Part# 5110
Maf Sensor Cleaner
11 oz



Part# 5232
Diesel Fuel Therapy 30 oz



Part# 5319
GDI Intake Valve Cleaner
Aerosol 11 oz



Part# 5330
Ultra Screw Loose
Super Penetrant 11 oz



Part# 5332
Trans-Kleen Automatic
Transmission Treatment 12 oz



Part# 5347
Rubberised Spray
Undercoating 16 oz



Part# 5671
Starting Fluid
11 oz



Part# SL1712
Mechanix Orange
Cit 16 oz



Part# SL22133
Compressor Oil
1 Gallon Bottle



Part# SL2531
Air Tool Oil
Sta-Lube 15 oz



Part# SL2533
Air Tool Oil
Sta-Lube 1 Gal



Part# SL2631
Power Steering Fluid 15 oz
Steer Aid-Conditi & Leak Stop



Part# SL3111
Wheel Bearing Grease
14 oz



Part# SL3301
Brake & Caliper Grease
Synthetic 2.5 oz



Part# SL3331
E.P. Anti-Seize Eng. Assem.
Lube Sta-Lube 10 oz

ELECTRICAL


Part# 2005
Lubricant 2-26
11 oz



Part# 2006
Lubricant 2-26
1 Gal



Part# 2018
Lectra Clean
19 oz



Part# 2020
Lectra Clean
1 Gal



Part# 2130
Qd Contact Cleaner
11 oz



Part# 2140
Contact Cleaner 2000
14 oz.

INDUSTRIAL


Part# 1751592
Green Force
Degreaser 5 Gal



Part# 3005
Lubricant 3-36
11 oz



Part# 3040
Food Grade Silicone
10 oz



Part# 3050
Chain & Wire Rope Lube
10 oz



Part# 3055
Food Grade Chain Lube
12 oz



Part# 3065
Belt Dressing
10 oz



Part# 3080
White Lithium
Grease 10 oz



Part# 3081
Food Grade Machine
Oil Aerosol 11 oz



Part# 3083
Welder's Anti
Spatter 14 oz



Part# 3084
Dry Moly Lubricant
11 oz



Part# 3095
Heavy Duty Degreaser
19 oz



Part# 3262
Sp-350 Indoor Corrosion
Inhibitor 16 oz.



Part# 3282
Sp-400 Corrosion
Inhibitor 10 oz

MARINE


Part# 5557
Marine Biocon
Diesel Fuel 12oz



Part# 6006
6-56 Marine Formula
Lubricant 9 oz



Part# 6026
Heavy Duty Corrosion
Inhibitor Marine 10 oz



Part# MK2032
On & Off Hull &
Bottom Cleaner 32oz



Part# MK3918
Marine Cleaner
For Glass 32 oz



Part# MK4016
On & Off For
Outdrivers 15 oz

SPECIALTY



Part# 14010
Wasp & Hornet
Killer Plus
Insecticide, 14 oz



Part# 14021
Spray Applicator
Bottle 24 oz



Part# 14051
Cutting Oil 1 Gal



Part# 14071
Minute Mend
Epoxy Putty 2 oz



Part# 14070
Minute Mend
Epoxy Putty 4 oz



Part# 14400
Foaming Citrus
All Purpo.
Cleaner 18 oz



Part# 14406
Hydro-Force
All Purpose 18 oz



Part# 14407
Hydro-Force
All Purpose 32 oz



Part# 14408
Hydro-Force
All Purpose 1 Gal



Part# 14409
Hydro-Force
All Purpose 5 Gal



Part# 14410
Hydro-Force
All Purpose 55 Gal



Part# 14414
Hydro-Force Ind.
Strength 18 oz



Part# 14415
Hydro-Force Ind.
Strength 32oz



Part# 14416
Hydro-Force Ind.
Strength 1 Gal



Part# 14417
Hydro-Force Ind.
Strength 5 Gal



Part# 18410
Sealcoat
Red Urethane 11 oz



Part# 18411
Seal Coat Clear 16 oz
Urethane Aerosol



Part# 18412
Zinc-It Cold Galvanize
Corrosion Inhibitor 13 oz



Part# 18413
Zinc-It Instant Cold
Galvanize 1 Gal



Part# 18414
Brite Zinc Corrosion
13 oz



Part# 18418
Rust Converter 32 oz



Part# 3442
Cutting Fluid 5 Gal



Part# 5185-CRC
Duster, Moisture-Free
8 oz



Part# SL35901
Copper Grade
Anti-Seize 8 oz



Part# SL35911
Nickel Anti-Seize
8 oz



CRC INDUSTRIES

**CHEMICAL SOLUTIONS
TO KEEP YOU MOVING**

CRC The Professional's Choice





POWER TOOLS



PART # 60130-33
 • GRINDER, ANGLE - 4.1/2" & 7" DIA
 • 7.0A/120V,12000RPM



PART # 6177-20
 • 14" ABRASIVE CUT-OFF MACHINE
 • 15-AMP - 4.0 MAX HP
 • 3900 RPM



PART # 5268-21
 • ROTARY HAMMER- 1/8" SDS+
 • 8.0A-IMP: 3.6 FT-LBS (3-MODES)



PART # 5374-20
 • HAMMER DRILL 1/2", CORDED
 • 5.6 AMP 0-3000 RPM
 • 0- 48000 BPM



PART # 603421
 • SANDER, RANDOM ORBITAL- 5"
 • 3.0A/120V/ W/VACUUM ATTACH



PART # 6430-20
 • CIRCULAR SAW, 7 1/4 (ECON)
 • - 15A/120V - CUT: 2.3/8"



PART # 2607-22CT
 • DRILL/DRIVER - CORDLESS
 • 18V LI-ION 1/2 IN. - 400/1800 RPM



PART # 2408-22
 • DRILL/DRIVER, 3/8" - CORDLESS
 • - 12V LI-ION - 400/1500 RPM
 • REPLACES ITEM #: 2410-22



PART # 2401-22
 • 1/4" HEX SCREWDRIVER KIT



PART # 5485-21
 • ROTARY HAMMER 7/8" SDS+
 • 8-AMP 0/1500 PRM
 • 0/4500 BPM



ABRASIVES



PART # 230-280-P100
 Full resin bonded aluminium oxide abrasive paper, C weight backing with latex, open structure. For hand and orbital sanding operations.
 • Dry and wet use • Good flexibility



PART # 230-280-P40
 Full resin bonded aluminium oxide abrasive paper, D weight backing, open structure. For hand and orbital sanding operations.
 • Dry and wet use • Good flexibility

LISTING FOR SAIT ABRASIVES

Item Number	Description
230-280-P100	A/Sive Sheet P100
230-280-P120	A/Sive Sheet P120
230-280-P1200	A/Sive Sheet P1200
230-280-P220	A/Sive Sheet P220
230-280-P280	A/Sive Sheet P280
230-280-P320	A/Sive Sheet P320
230-280-P40	A/Sive Sheet P40
230-280-P400	A/Sive Sheet P400
230-280-P60	A/Sive Sheet P60
230-280-P600	A/Sive Sheet P600
230-280-P80	A/Sive Sheet P80
230-280-P800	A/Sive Sheet P800



CANISTERS



Item# 1100-G
Description:
 1 Gal Gas Canister



Item# 2200-G
Description:
 2 Gal Gas Canister



Item# 6119-G
Description:
 5 Gal Gas Canister



Item# 8500-D
Description:
 5 Gal Diesel Canister



CIRCULAR BLADES



PART # 57719
 Saw Blade 14"x.125x 20mm/1"
 Re-Inf Conc. | H75



PART # 57721
 Saw Blade 14"x.125x 20mm/1"
 Asphalt H105

CHAINSAW FILES



Part# 5605-772-4006
Description:
 • File Chainsaw 4.0 x 200 mm
 • For 1/4", 3/8 pm, 3/8 pmn
 • Eg MS 170, 180, 250



Part# 5605-772-4802
Description:
 • File Chainsaw 4.8 x 200 mm
 • For .325 pmm



Part# 5605-772-5202
Description:
 • File Chainsaw 5.2 x 200 mm
 • For 3/8 Rm
 • Eg MS 310, 381, 460, 461, 462, 660, 661



Part# 5605-772-5206
Description:
 • File Chainsaw 5.2 mm
 • For 3/8" Rm
 • Eg MS 310, 381, 382, 460, 461, 462, 660, 661



Part# 5605-772-5502
Description:
 • File Chainsaw 5.5 x 200 mm
 • For .404 Rm
 • Eg 051, 070, 085

LUBRICANTS AND MEASUREMENTS



Part# 0781-516-5004
Description:
 • Bar And Chain Lubricant
 1L
 • Biodegradable



Part# 0781-120-1022
Description:
 • Gear Lubricant 40g
 • All Brushcutters



Part# 0781-120-1117
Description:
 • Gear Lubricant 80g
 • All Brushcutters



Part# 0781-319-8060
Description:
 • Two-Stroke Eng Lubricant
 100ml
 • 50:1 Ultra Full Syn



Part# 0781-319-8402
Description:
 • Two-Stroke Eng Lubricant
 120ml
 • 50:1 Mixing Ratio



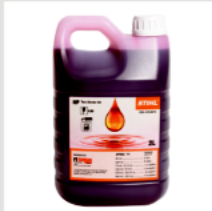
Part# 0781-319-8403
Description:
 • Two-Stroke Eng Lubricant
 240 ml
 • 50:1 Mixing Ratio



Part# 0781-319-8405
Description:
 • Two-Stroke Eng Lubricant
 500 ml
 • 50:1 Mixing Ratio



Part# 0781-319-8410
Description:
 • Two-Stroke Eng Lubricant
 1L
 • 50:1 Mixing Ratio



Part# 0781-319-8412
Description:
 • Two-Stroke Eng Lubricant
 2L
 • 50:1 Mixing Ratio



Part# 0000-881-0186
Description:
 • Measuring Beaker
 100ml
 • For Fuel/Oil Mixture



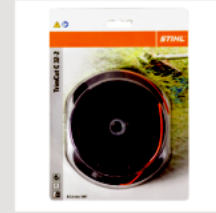
NYLON HEADS



Part# 4002-710-2169
Description:
 Autocut C26-2 Nylon Head
 For: FS 55, 85, 94, 120, 131, 250



Part# 4003-710-2115
Description:
 Autocut 46-2 Nylon Head
 For: FS 160, 280, 300, 380, 450, 461



Part# 4002-710-2198
Description:
 Trimcut C 32-2 Nylon Head (manual)
 For: FS 55, 85, 94, 120, 131, 250

NYLON LINES



Part# 0000-930-2335
Description:
 • Nylon Line 2.0mm/ .080" Round
 • 15.2m/ 50ft Green



Part# 0000-930-2338
Description:
 • Nylon Line 2.4mm/ .095" Round
 • 14m/ 45ft Orange



Part# 0000-930-2339
Description:
 • Nylon Line 2.4mm/ .095" Round
 • 44m/143ft 1/2lb Orange



Part# 0000-930-2341
Description:
 • Nylon Line 2.7mm/ .105" Round
 • 30.7m/ 35ft Red



Part# 0000-930-2342
Description:
 • Nylon Line 2.7mm/ .105" Round
 • 32m/ 104ft 1/2lb Red



Part# 0000-930-2344
Description:
 • Nylon Line 3.0mm/ .120" Round
 • 53m/173ft - 1lb Yellow



Part# 0000-930-2345
Description:
 • Nylon Line 3.3mm/ .130" Round
 • 7.6m/ 25ft - Black

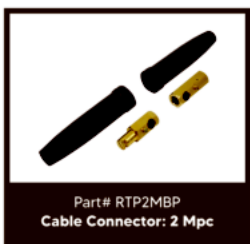
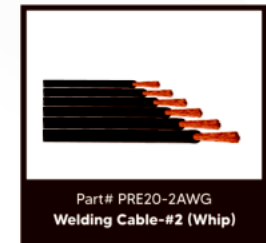
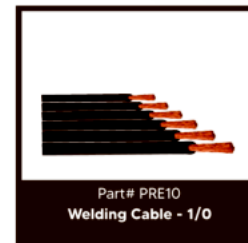


Part# 0000-930-2346
Description:
 • Nylon Line 3.3mm/ .130" Round
 • 19m/62ft - 1/2lb Black



Part# 0000-930-2347
Description:
 • Nylon Line 3.3mm/ .130" Round
 • 47m/155ft 1lb Black







CHE58
Part# E7018

Packaging:	Size:
• 5kg/box	• 12 G
• 20kg/carton,	• 10 G
• 1000kg/pallet	• 8 G



CHE40
Part# E6013

Packaging:	Size:
• 2.5kg/box	• 12 G
• 20kg/carton,	• 10 G
• 1000kg/pallet	



CHE425G
Part# E6010

Packaging:	Size:
• 5kg/box	• 10 G
• 20kg/carton,	• 8 G
• 1000kg/pallet	

WELDING PRODUCTS



ELECTRODE HOLDER, 200A LIGHT DUTY
Item# 60203.47



ELECTRODE HOLDER, 300A LIGHT DUTY
Item# 60203.07



ELECTRODE HOLDER, 300A HEAVY DUTY
Item# 60203.87



ELECTRODE HOLDER, 500A HEAVY DUTY
Item# 60203.88



DOUBLE PALM GLOVE, LEATHER 10"
Item# 60203.57



WELDING GLOVE
Item# 60203.21



LATEX GLOVE, FIBER RUBBER COATED PALM
Item# 60203.58.03



LATEX GLOVE, FIBER RUBBER COATED PALM
Item# 60203.58.04



AUTO DARKEN WELDING HELMET (IMPROVED MODEL)
Item# 60203.35.01



DOTTED PALM GLOVE
Item# 60203.21



FACE SHIELD HEADGEAR
Item# 60203.59



FACE SHIELD (CLEAR)
Item# 60203.60

WELDING PRODUCTS



SAFETY GLASSES (CLEAR)

Item# 60203.35.01



SAFETY GLASSES (DARK)

Item# 60203.64



SAFETY GLASSES (DARK)

Item# 60203.67



SAFETY GLASSES (CLEAR)

Item# 60203.66



MMA, LIFT TIG, INVERTER IGBT ARC WELDER, 220V/110V, MAX 160A

Item# 202112



DISPOSABLE COVERALL, WHITE55GSM

Item# 60203.68



DISPOSABLE COVERALL, WHITE55GSM MICROPOROUS, WITH HOOD

Item# 60203.68



BACK SUPPORT BELT M20CM X 100CM PP PLASTIC ROD

Item# 60203.75-M



BACK SUPPORT BELT M20CM X 108CM, PP PLASTIC ROD

Item# 60203.75-L



BACK SUPPORT BELT, M20CM X 116CM, PP PLASTIC ROD

Item# 60203.75-XL



CUTTING DISC

Part# P80411153M

- 4.5 x 1/8 x 7/8"
- Flat
- Type 41
- For Metal
- 115 x 3 x 22.2mm



CUTTING DISC

Part# P80411803M

- 7 x 1/8 x 7/8"
- Flat
- Type 41
- For Metal
- 180 x 3 x 22.2mm



CUTTING DISC

Part# P80411151IN

- 4.5 x 1/2 4 x 7/8"
- Flat
- Type 41
- For Metal and SS
- 115 x 1 x 22.2mm



CUTTING DISC

Part# P80421153M

- 4.5" x 1/8" x 7/8"
- Center Depressed
- Type 42
- For Metal
- 115 x 3 x 22.2mm



CUTTING DISC

Part# P804211508INL

- 4.5 x 1/24 x 7/8"
- Center Depressed
- Type 42
- For Metal and SS
- 115 x 0.8 x 22.2mm



CUTTING DISC

Part# P80421803M

- 7 x 1/8 x 7/8"
- Center Depressed
- Type 42
- For Metal
- 180 x 3 x 22.2mm



CHOP SAW DISC

Part# P80413553M

- 14 x 1/8 x 1"
- Flat
- Type 41
- For Metal
- 355 x 3 x 25.4mm



GRINDING DISC

Part# P80271156M

- 4.5" x 1/4" x 7/8"
- Center Depressed
- Type 27
- For Metal
- 115 x 6 x 22.2mm



GRINDING DISC

Part# P80271806MS

- 7 x 1/4 x 7/8"
- Center Depressed
- Type 27
- For Metal
- 180 x 6.0 x 22.2mm



WET DIAMOND SAW BLADE

Part# PEW115227

- 4.5"
- Continuous Disc
- For Tiles
- 115 x 22.23 x 7mm



DRY DIAMOND SAW BLADE

Part# PED115227

- 4.5"
- Segmented Disc
- (Brick, Block, Masonry)
- 115 x 22.23 x 7mm



DRY DIAMOND SAW BLADE

Part# PED3502510

- 14" Segmented Disc
- For Reinforced Concrete
- 350 x 25.4 x 10mm



CUP BRUSH

Part# 98101

- 2-3/4"
- Rpm Max: 12500
- Filltypes (MM) :0.3/0.35
- 65 x 24mm



CUP BRUSH

Part# 98104

- 4"
- Rpm Max: 8500
- Filltypes (MM): 0.3/0.5
- 100 x 27mm



WIRE BRUSH TWIST KNOT

Part# 98301

- 2-3/4"
- Rpm Max: 12500
- Filltypes (MM): 0.5
- 65 x 24mm



WIRE BRUSH TWIST KNOT

Part# 98304

- 4"
- Rpm Max: 8500
- Filltypes (MM): 0.5
- 100 x 27mm



CIRCULAR BRUSH TWIST KNOT

Part# 98601

- 4"
- Rpm Max: 11000
- Filltypes (MM): 0.5
- 100 x 22mm

STIHL

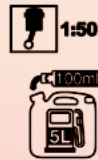
KNOW YOUR GENUINE STIHL LUBRICANTS



STIHL Certified seal is clearly visible.

Proper spelling of the STIHL brand name (STIHL) with accompanying part/item #.

HP Two Stroke Oil



STIHL

0123-456-7890



Volume content of the bottle is clearly stated; no checkboxes are used.

1L

Distributed By



3-5 Ibis Avenue, Ibis Acres, San Juan, Trinidad, W.I.
Tel: (868) 612-4FTF (4383) / Fax: (868) 674-7695
Website: www.ftfarfan.com

STIHL OIL

UNLEADED GASOLINE

20 ml	1 litre
100 ml	5 litres
75 ml / 2.5 fl oz	1 US gallon
150 ml / 5 fl oz	2 US gallon
375 ml / 12.5 fl oz	5 US gallon
450 ml / 15 fl oz	6 US gallon

FT Farfan Ltd. (Sole Authorized Distributor) is clearly shown with logo and contact information.

A user-friendly mixing ratio is provided.

NON-GENUINE / COUNTERFEIT







CONTACT US



- 3-5 Ibis Avenue, Ibis Acres, **San Juan**
- 21 Scott Street, **San Fernando**
- #1 O'Meara Road, **Arima**



1 868 612-4FTF (4383)



www.ftfarfan.com



FT Farfan Ltd.